

Sketch
Book

⑫

ホーム・香港

1990. ホーム・香港



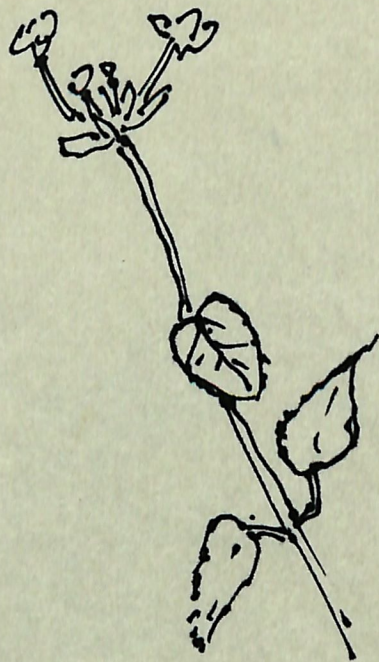
4 979093 000432
maruman S140



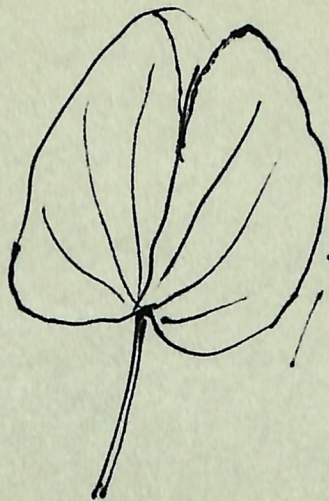
Lantern flower ?

'90.2.11

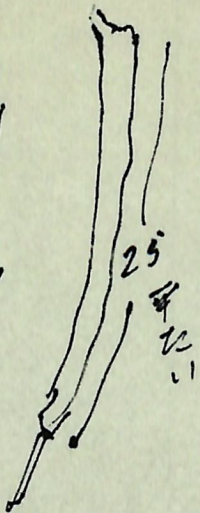
at Otsuka
Muska



九段Park 2.20



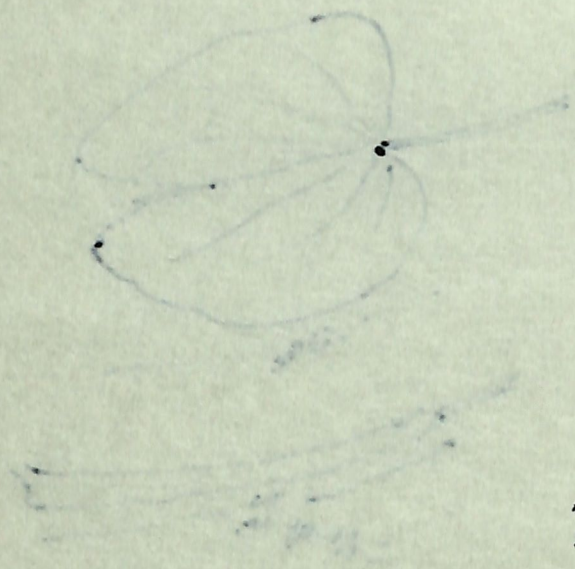
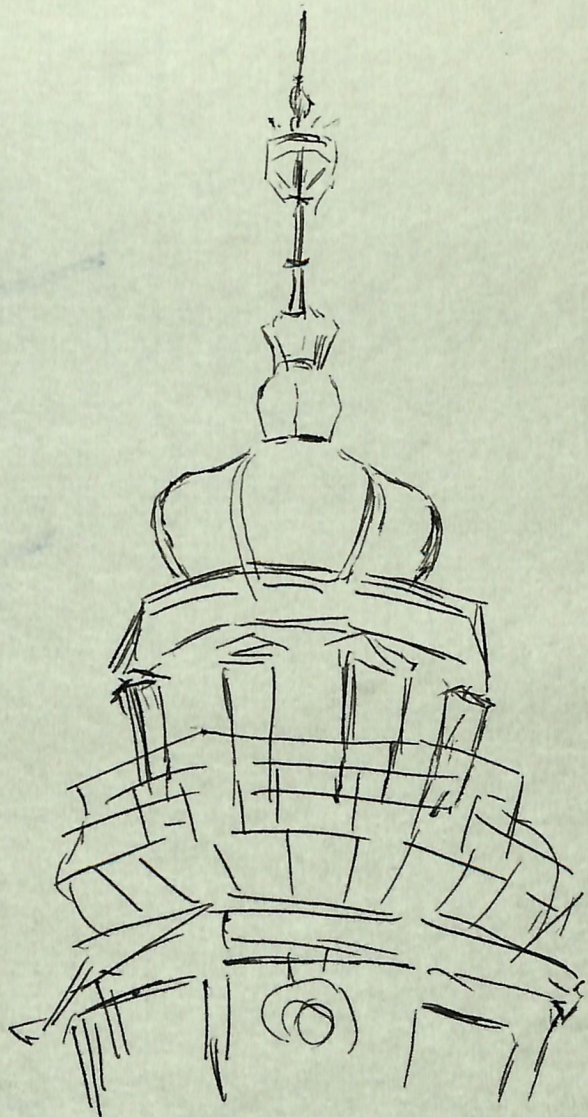
12092



25

12092











Gulf Hotel. 8 Feb
'90. 2.15



丈: 2m 葎草子.
Gulf Hotel beach
'90. 2. 15.



Gulf Hotel. 194

75%
x: 3m

x: 5m



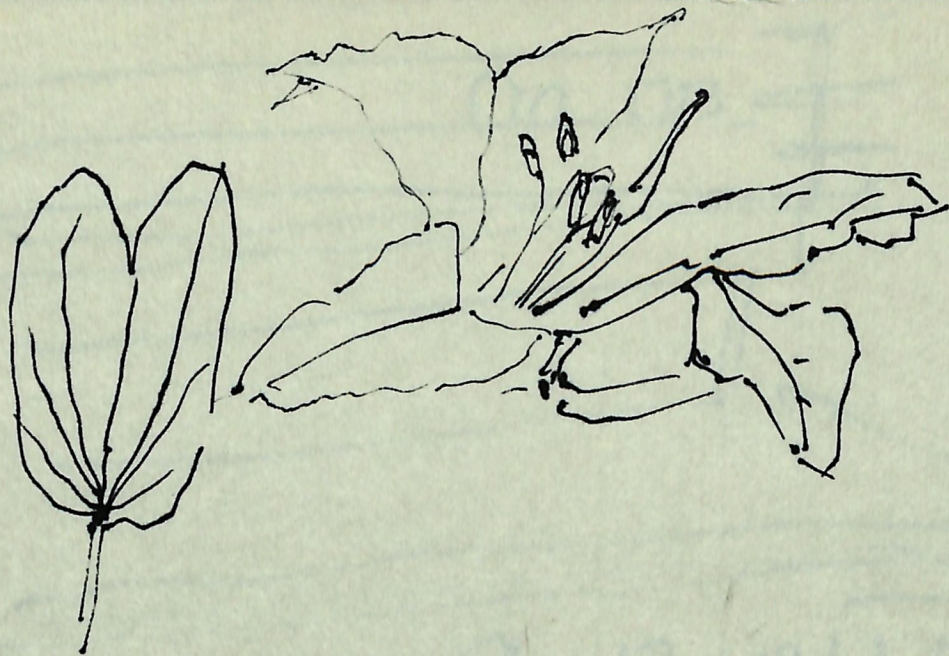
大塚. 庭.

'90. 2. 20



Massan 18p

'90. 2. 20



新. 白.

子 m.

Handwritten notes in Chinese characters, possibly describing the plant or the drawing process.

Handwritten musical notation on a five-line staff. The notes are represented by simple vertical stems. The first two notes are beamed together. The word "מו קו" is written in the center of the staff.

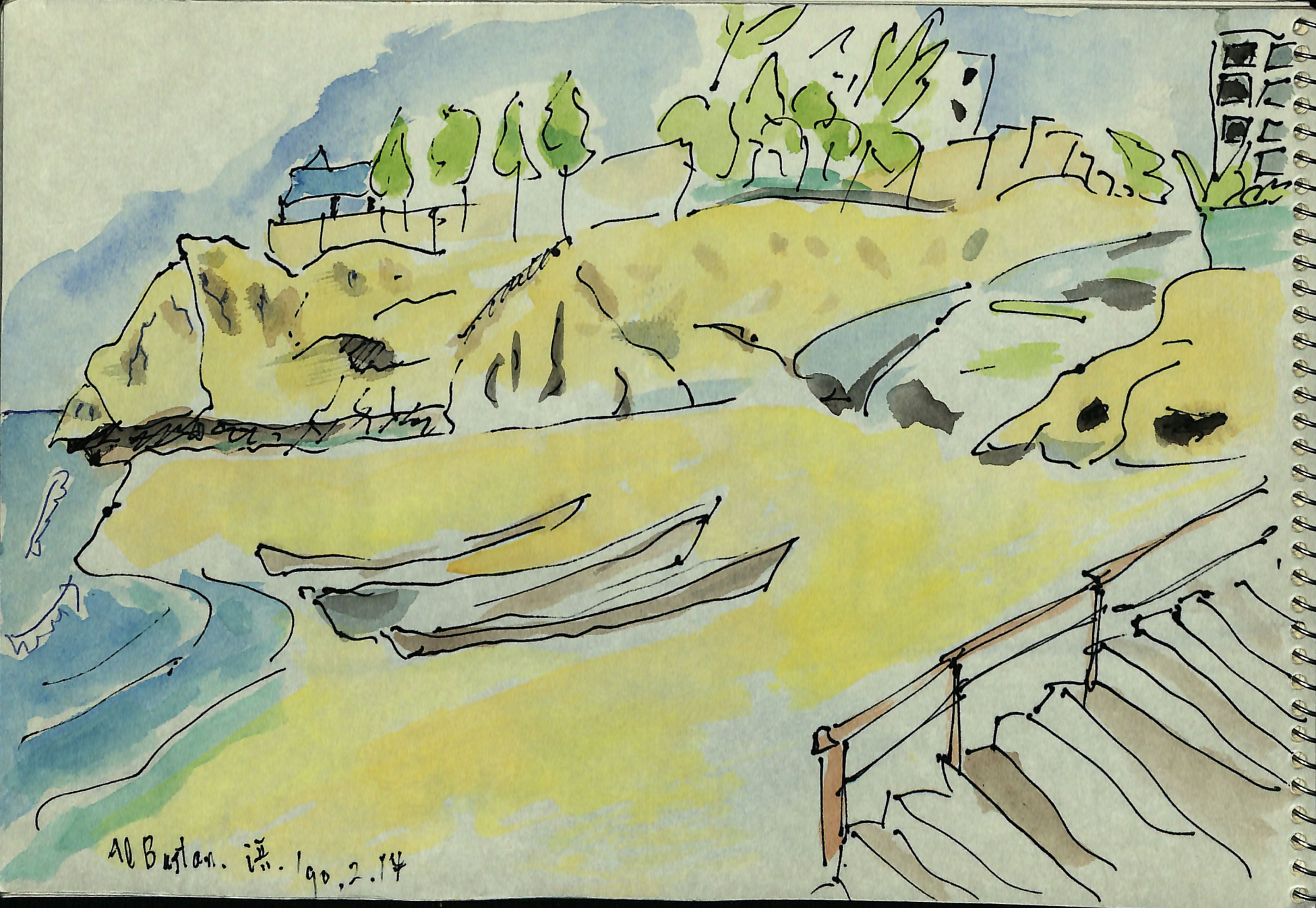
A complex handwritten musical sketch. It features a horizontal line with several square notes of varying sizes. Below this line is a dense, overlapping series of lines and curves, suggesting a more intricate musical structure or perhaps a rhythmic pattern. On the right side, there are vertical lines that resemble stems or perhaps a different notation system. The overall impression is that of a rough, exploratory musical sketch.



Kimie Taito
1999



香港霧
190.2.23

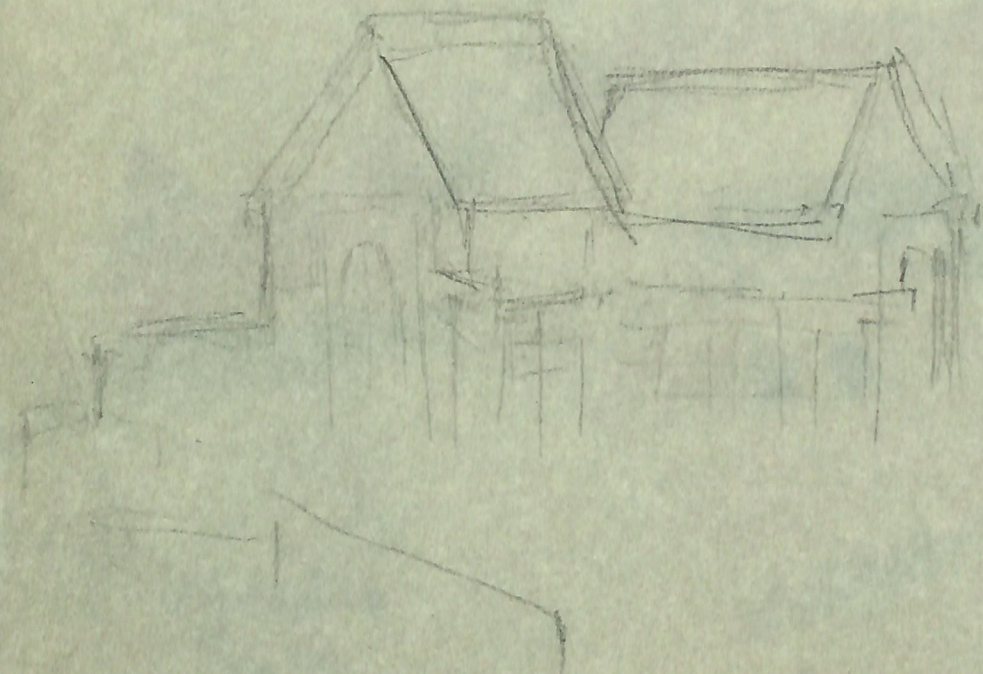


At Bostan. 语. 190. 2. 14



Niwacka
v. n.
190 2.13

アルハム
ミ
ミ
ミ
ミ
ミ



Sketch
Book

4# 351

¥ 135



4 979093 000432
maruman S140